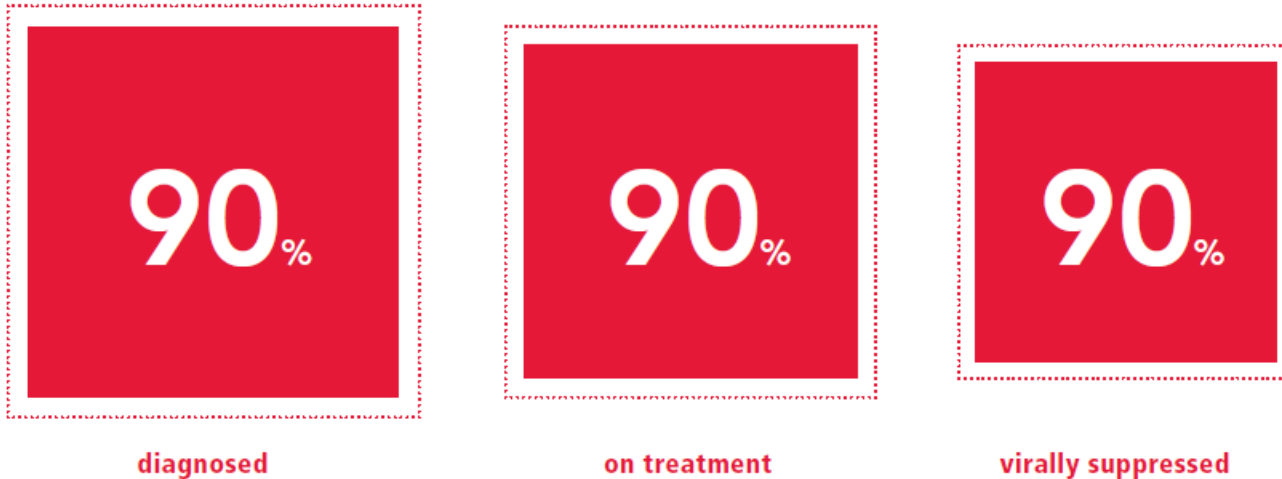




HIV/AIDS infection in Romania
UPDATE
30 June 2019

1. UNAIDS targets for 2020 launched at 1 January 2017

THE TREATMENT TARGET

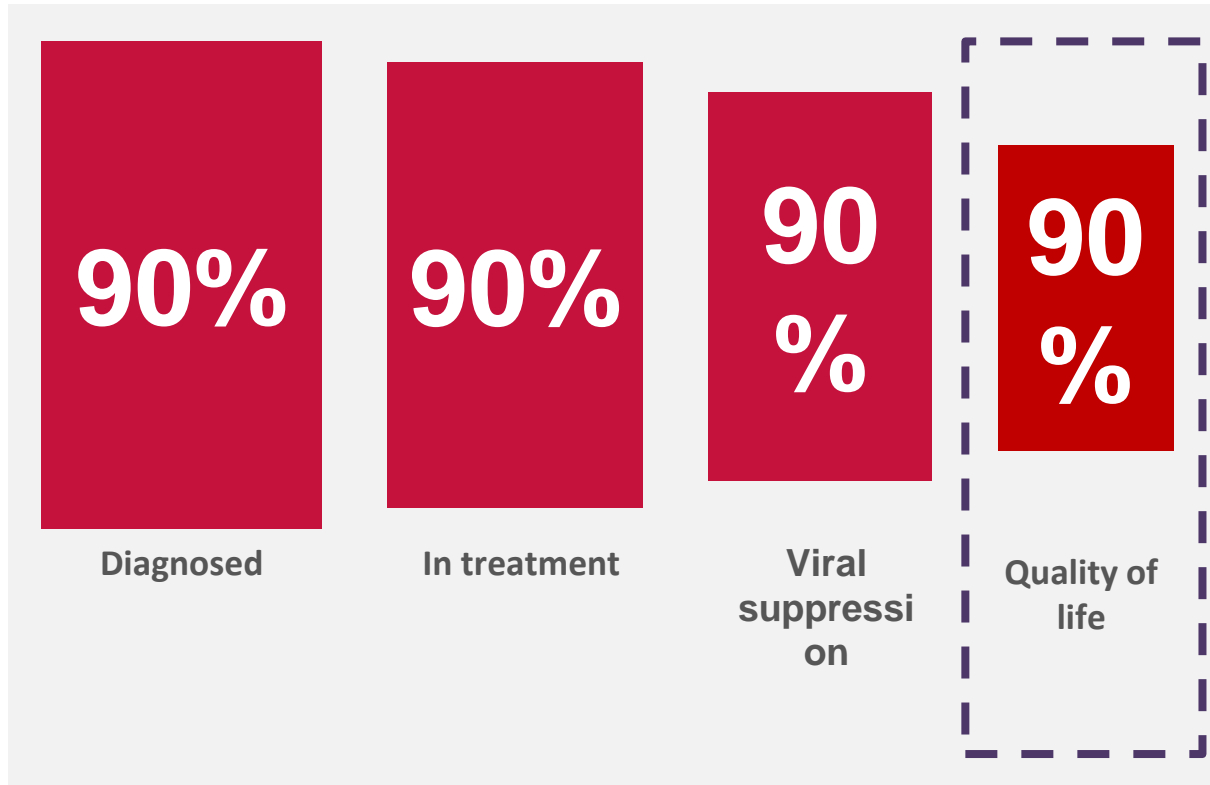


90% of persons diagnosed with HIV by 2020.

90% of persons diagnosed are under antiretroviral treatment by 2020.

90% of those under antiretroviral treatment obtain viral suppression <50 copies/mL by 2020.

“Beyond viral suppression: the time for the fourth ‘90”



“LONG TERM HEALTH CONCEPT”

Fast Track Targets by 2020

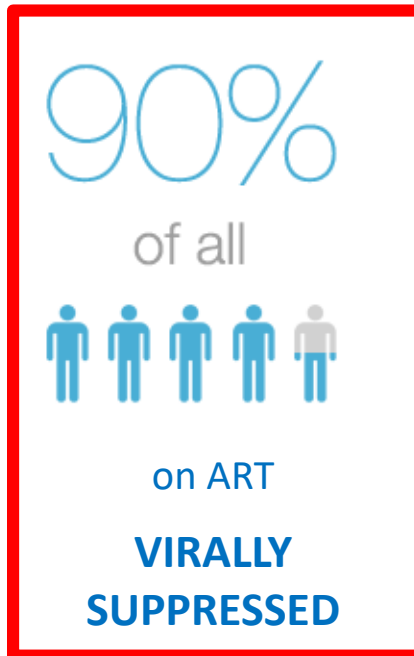
Target 1



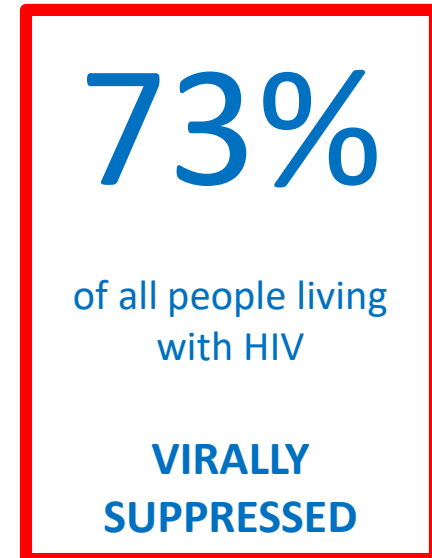
Target 2



Target 3



Overall target



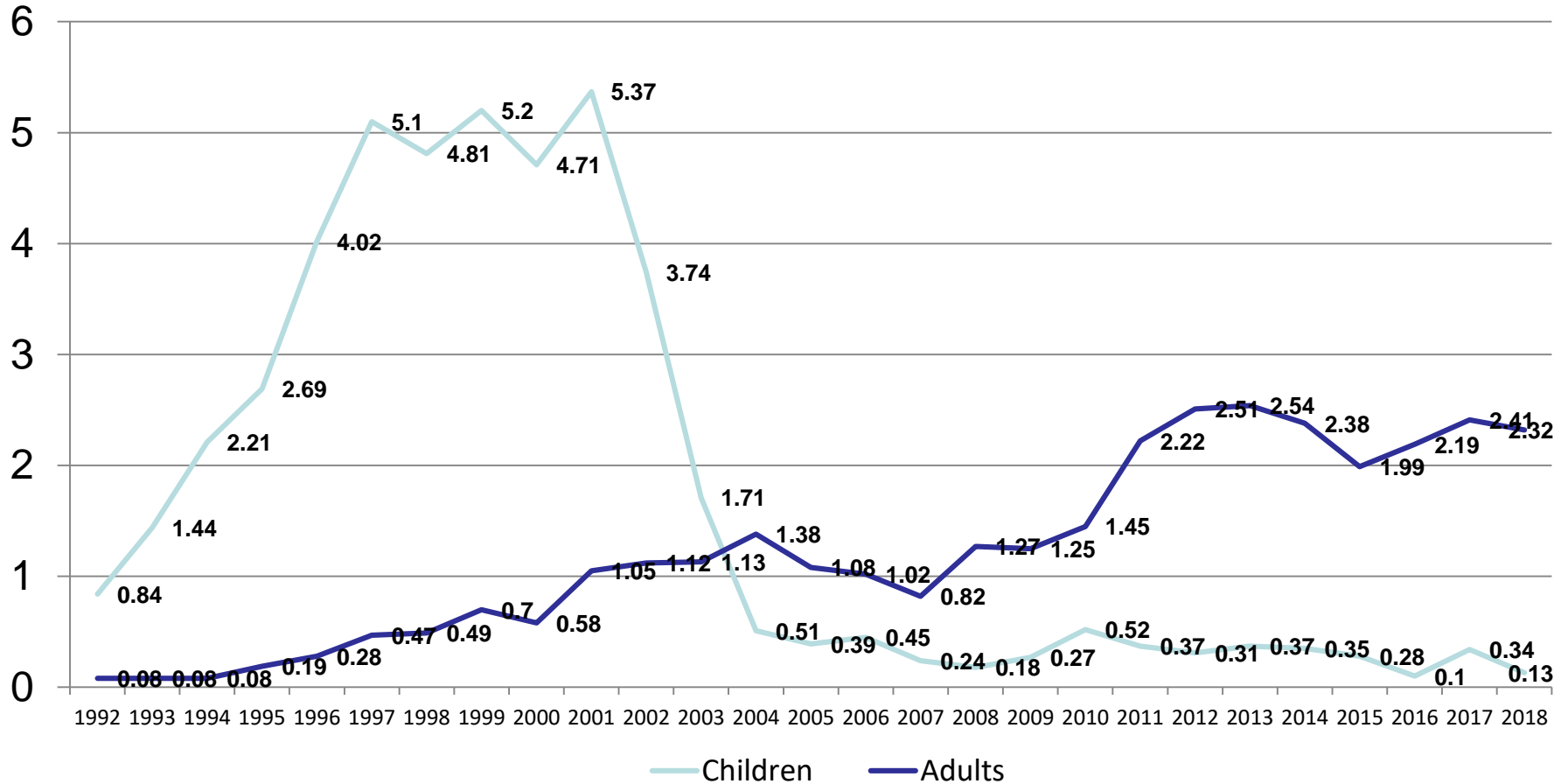
=

MINISTRY OF HEALTH
National Institute for Infectious Diseases “Prof. Dr. Matei Bals”
Compartment for Monitoring and Evaluation of HIV/AIDS Data in Romania

General data at 30 June 2019

CUMULATIVE HIV/AIDS CASES (CUMULATIVE 1985-2019) <u>OF WHICH:</u>	24.333
TOTAL AIDS (CUMULATIVE 1985-2019)	16.355
TOTAL HIV (CUMULATIVE 1992-2019)	7.978
LOST FROM RECORDS HIV/AIDS CHILDREN+ADULTS	754
TOTAL NUMBER OF AIDS DEATHS (1985-2019)	7.580
NUMBER OF PLWHA:	15.999
0-14 years	188
15-19 years	146
≥ 20 years	15.665
NEW HIV/AIDS CASES DETECTED IN 2019:	315
NEW HIV RECORDED CASES	179
NEW AIDS RECORDED CASES	136
HIV/AIDS deaths registered in 2019	74

HIV incidence in adults and children 1985-2018 (100.000)



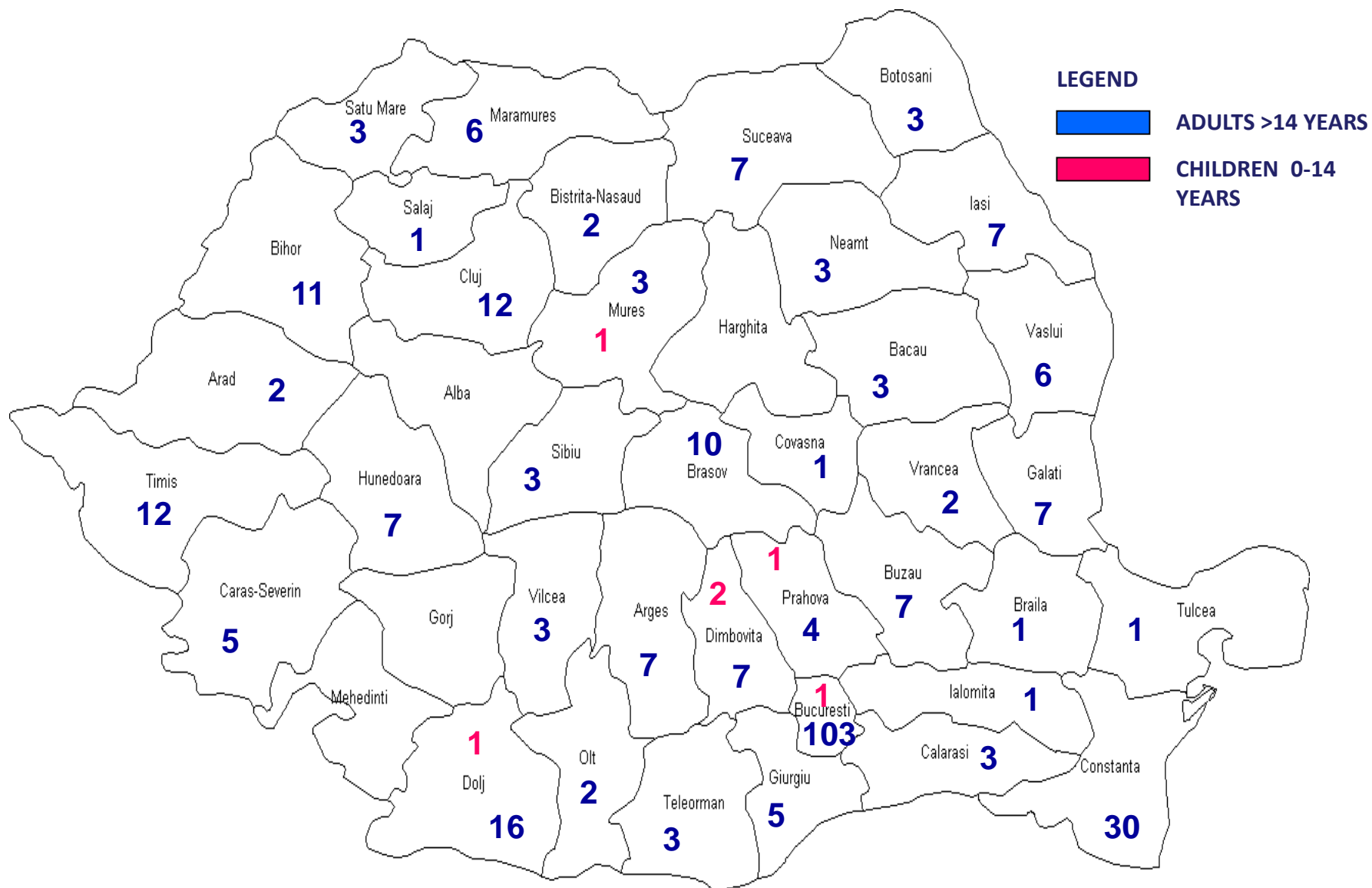
Children 2018: 0,13/100.000

Adults 2018: 2,32/100.000

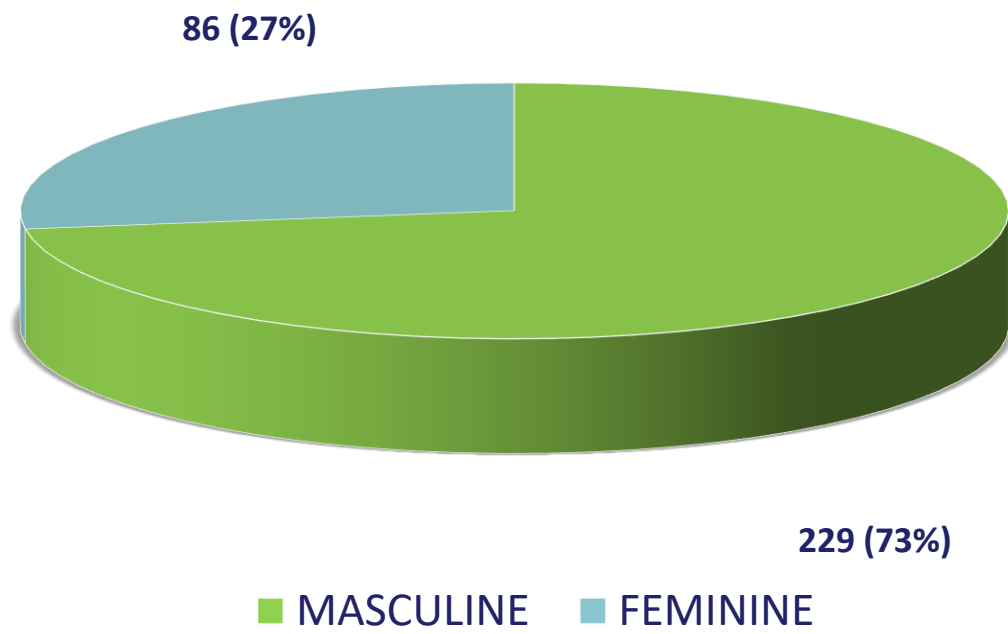


2. New HIV/AIDS cases 1 January – 30 June 2019

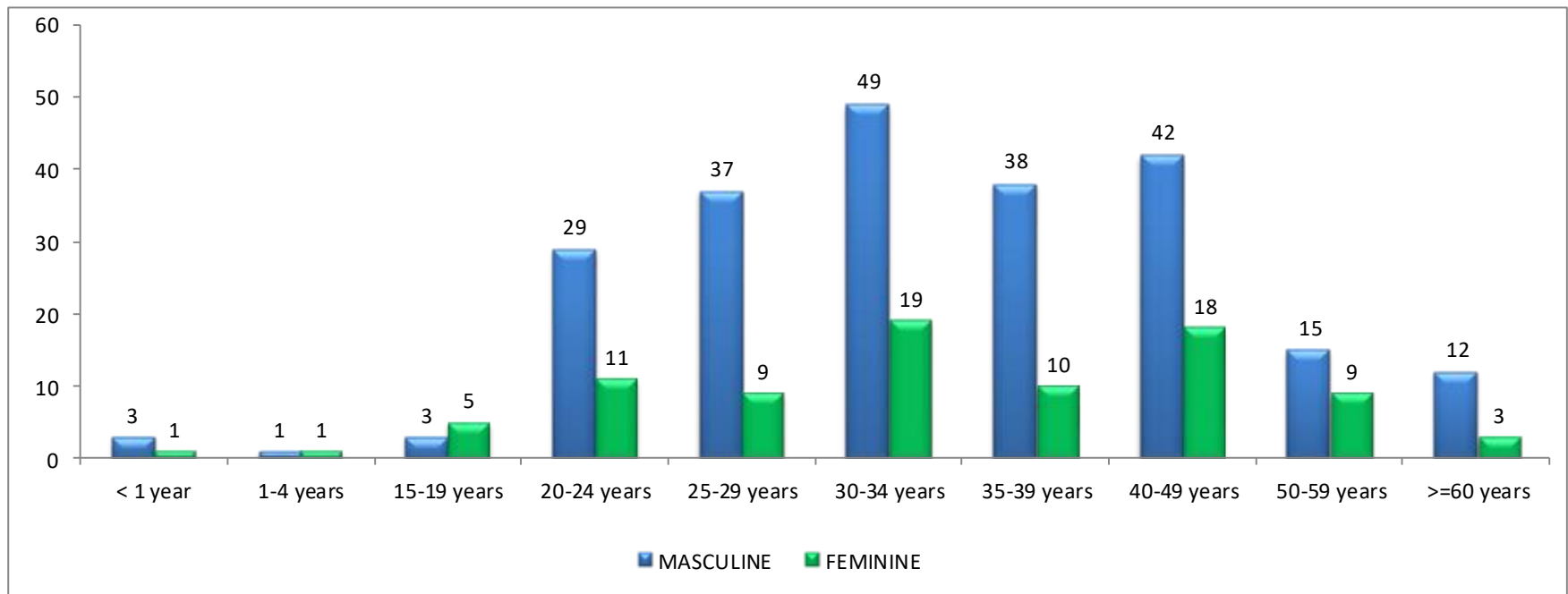
Distribution of HIV/AIDS cases, by counties, recorded in 01-30.06.2019



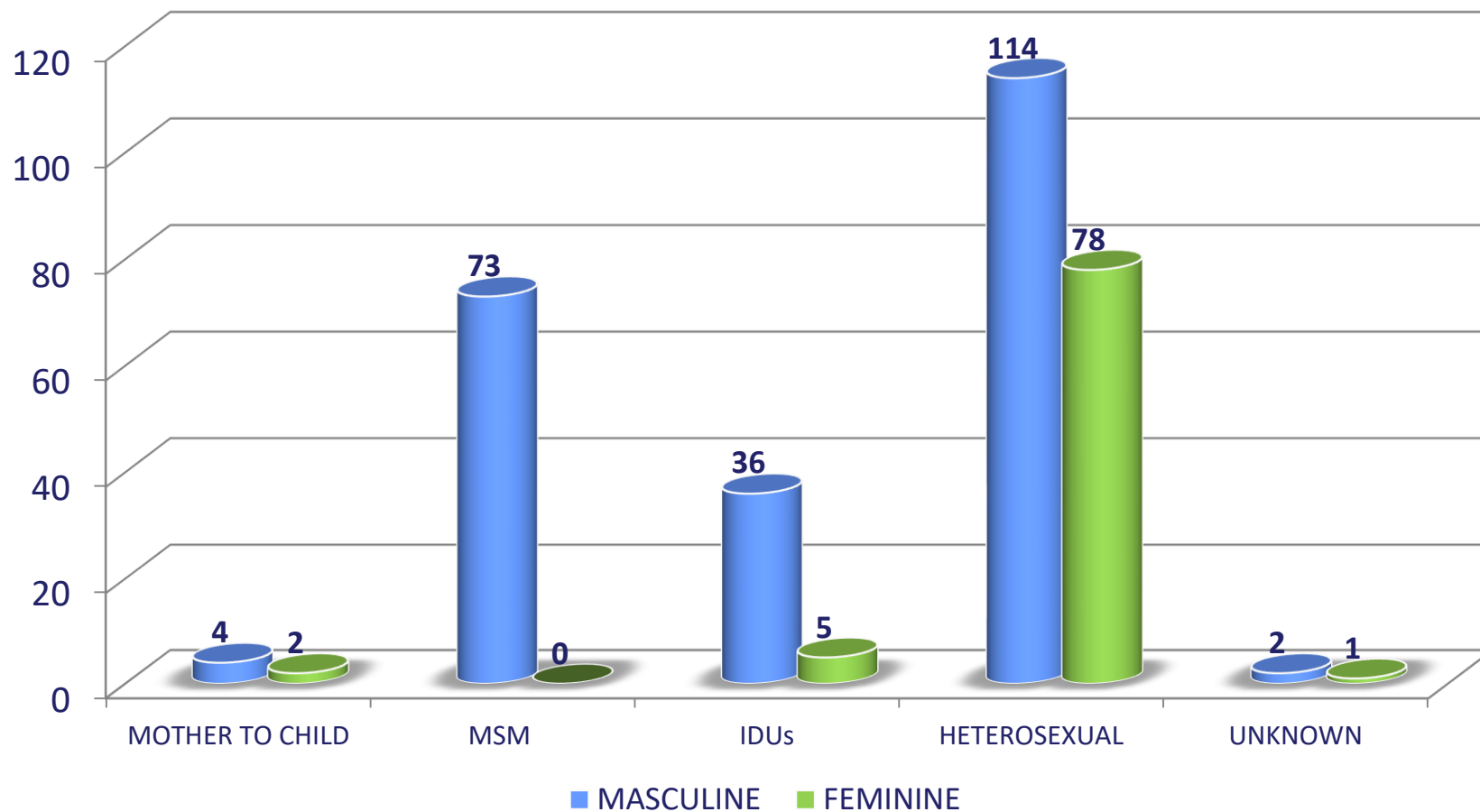
Distribution of new HIV/AIDS cases by sex, registered in 01.01-30.06.2019



Distribution of new HIV/AIDS cases by age group and sex registered in 01.01-30.06.2019



Distribution of HIV/AIDS cases, by way of transmission, registered between 01.01-30.06.2019



**New cases of HIV/AIDS infection registered in the national HIV data base between 2009-2019 vs.
New HIV/AIDS cases in injecting drug users registered in the national HIV data base between 2009-2019**

CRITERION	YEAR																					
	2009		2010		2011		2012		2013		2014		2015		2016		2017		2018		01.01-30.06.2019	
	TOTAL of which	IDUs	TOTAL of which	IDUs	TOTAL of which	IDUs	TOTAL of which	IDUs	TOTAL of which	IDUs	TOTAL of which	IDUs	TOTAL of which	IDUs	TOTAL of which	IDUs	TOTAL of which	IDUs	TOTAL of which	IDUs	TOTAL of which	IDUs
Number of HIV cases	256	6	289	7	404	98	478	156	529	145	485	83	441	72	439	52	448	58	424	50	179	21
Number of AIDS cases	300	6	293	12	385	66	451	148	483	178	439	125	428	124	371	89	332	63	326	42	136	20
TOTAL no. of HIV/AIDS cases	556	12	582	19	789	164	929	304	1012	323	924	208	869	196	810	141	780	121	750	92	315	41



3. HIV testing in the general population and in risk groups 2019

HIV testing* in risk groups 1 January-30 June 2019

Risk group	Negative tests	Positive tests	TOTAL	%POZITIV
STDs	471	8	479	1.67
TBC	4547	23	4570	0.50
MATERNITY	237	6	243	2.47
TESTING IN PREGNANT WOMEN	66221	39	66260	0.06
HEALTHCARE STAFF	5478	0	5478	0.00
PTS. ON HEMAODIALYSIS	2205	0	2205	0.00
TRANSFUSED PTS.	40	0	40	0.00
PRENUPTIAL CHECK-UP	2495	1	2496	0.04
DRUG USERS	14	0	14	0.00
INMATES	30	2	32	6.25
MEN WHO HAVE SEX WTH MEN	1	4	5	80.00
COMMERCIAL SEX	1	0	1	0.00
HIV CONTACTS (UNSAFE SEXUAL CONTACT)	420	43	463	9.29
SAILORS	2256	3	2259	0.13
DRIVERS	4024	5	4029	0.12
WORK ABROAD > 6 MONTHS	345	2	347	0.58
STAY ABROAD > 6 MOTNHS	171	0	171	0.00
TESTING BY REQUEST	49408	156	49564	0.31
OCCASIONAL TESTING	24863	338	25201	1.34
TOTAL	163227	630	163857	0.38

*The data is transmitted by the County Public Health Authorities and represent the number of tests performed.

HIV testing* in pregnant women 1 January-30 June 2019

Age group	Negative tests	Positive tests	TOTAL	%POZITIV
12-14 years	425		425	0.00
15-19 years	7685	10	7695	0.05
20-24 years	13847	8	13855	0.13
25-29 years	17629	5	17634	0.12
30-34 years	15841	12	15853	0.04
35-39 years	7416	4	7420	0.06
> 40 years	2220		2220	0.00
Unspecified age group	1158		1158	0.21
TOTAL	66221	39	66260	0.10

*The data is transmitted by the County Public Health Authorities and represent the number of tests performed.

HIV testing* in blood donors 1 January- 31 June 2019

Donation group	SEX	NEGATIVE	POZITIVE	TOTAL	%POZITIV
First donation	Masculin	32743	9	32752	0.027%
	Feminin	23982	4	23986	0.016%
	Total	56725	13	56738	0.022%
Repeated donation	Masculin	68151	6	68157	0.008%
	Feminin	36180	0	36180	0%
	Total	104331	6	104337	0.005%
Occasional donation	Masculin	30509	1	30510	0,003%
	Feminin	18715	0	18715	0%
	Total	49224	1	49225	0,002%
TOTAL		210280	20	210300	0.009%

*The data are transmitted by the National Transfusion Hematology "PROF.C.T.NICOLAU"

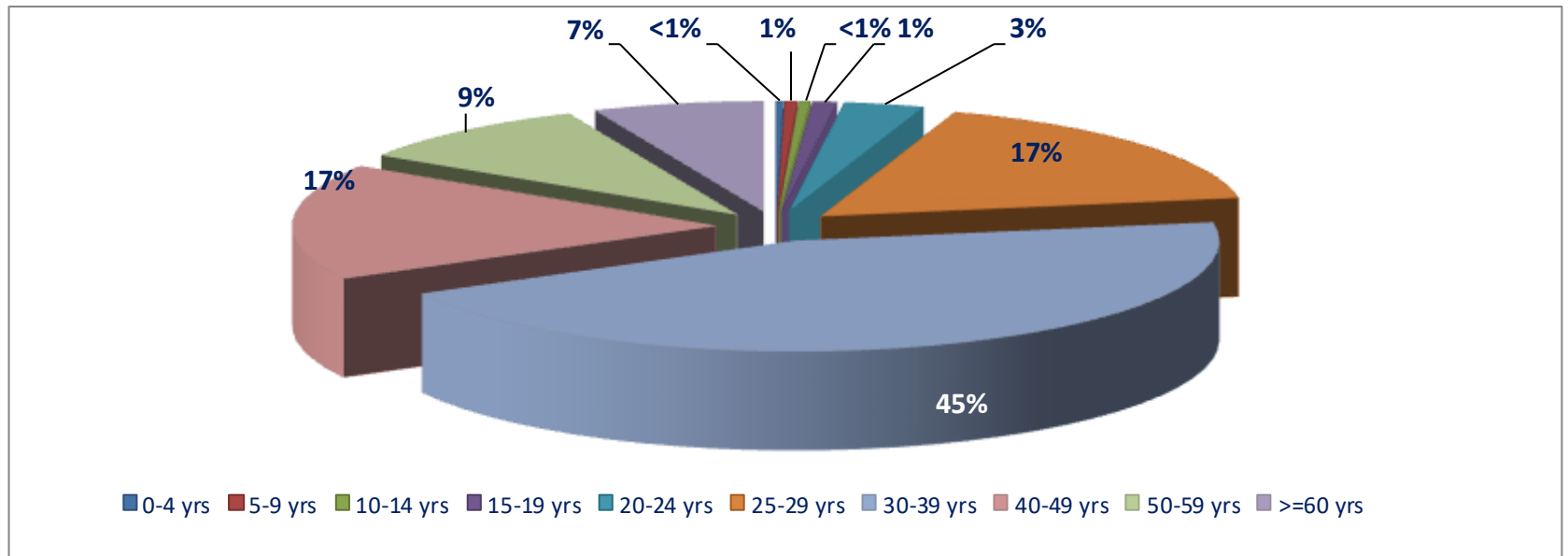


4. HIV/AIDS dynamics in Romania 1985-2018

**Distribution of HIV/AIDS cases by sex an current age
30 June 2019
(cumulative total 1985-2019)**

AGE GROUP	SEX		TOTAL
	MASCULINE	FEMININE	
< 1 year	3	2	5
1-4 years	15	23	38
5-9 years	40	37	77
10-12 years	24	27	51
13-14 years	9	8	17
15-19 years	59	87	146
20-24 years	282	208	490
25-29 years	1570	1176	2746
30-34 years	3191	2328	5519
35-39 years	1142	497	1639
40-49 years	1748	980	2728
50-59 years	889	613	1502
60 years and over	674	367	1041
TOTAL	9646	6353	15999

Distribution of HIV/AIDS cases by age group and current age 30 June 2019 (cumulative total 1985-2019)



Tendencies in ways of transmission

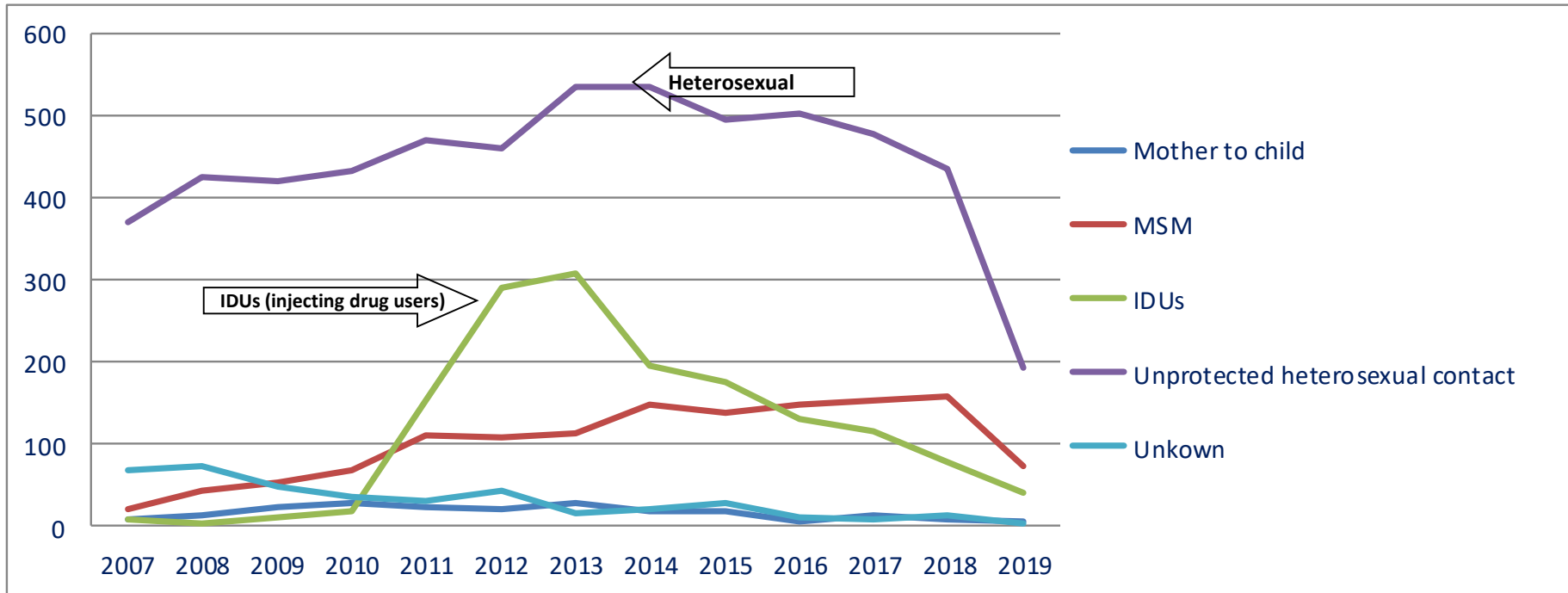
Romania 2007-2019*

Ways of transmission	2007	2008	2009	2010	2011	2012	2013	2014	2015	2016	2017	2018	30 June 2019
Mother to child transmission**	9 (1.9%)	13 (2.3%)	23 (4.14%)	27 (4.7%)	22 (2.8%)	21 (2.3%)	28 (2.8%)	17 (1.8%)	19 (2.2%)	6 (0.7%)	14 (1.8%)	7 (1%)	6 (2%)
MSM	19 (4%)	44 (8%)	52 (9.18%)	66 (11.4%)	104 (13%)	100 (10.8%)	104 (10.4%)	140 (15.3%)	128 (15%)	146 (18.3%)	150 (19.4%)	155 (22.4%)	73 (23%)
Injecting drug users	7 (1.5%)	4 (0.7%)	11 (1.98%)	18 (3%)	154 (19.5%)	290 (31.5%)	308 (30.8%)	195 (21.2%)	175 (20.4%)	130 (16.3%)	115 (15%)	77 (11.1%)	41 (13%)
MSM/IDU	1 (0.2%)		1 (0.18%)	1 (0.2%)	7 (0.9%)	7 (0.8%)	10 (1%)	9 (1%)	10 (1.2%)	3 (0.4%)	3 (0.4%)	3 (0.4%)	0
Heterosexual	371 (77.9%)	425 (76%)	420 (75.49%)	434 (74.7%)	471 (60%)	461 (50%)	536 (53,5%)	536 (58.4%)	495 (58%)	502 (63%)	479 (62.2%)	436 (63.1%)	192 (61%)
Unknown	69 (14.5%)	73 (13%)	49 (9%)	35 (6%)	30 (3.8%)	42 (4.6%)	15 (1.5%)	21 (2.3%)	28 (3.2%)	10 (1.3%)	9 (1.2%)	13 (2%)	3 (1%)
Total	476	559	556	581	788	921	1001	918	855	797	770	691	315

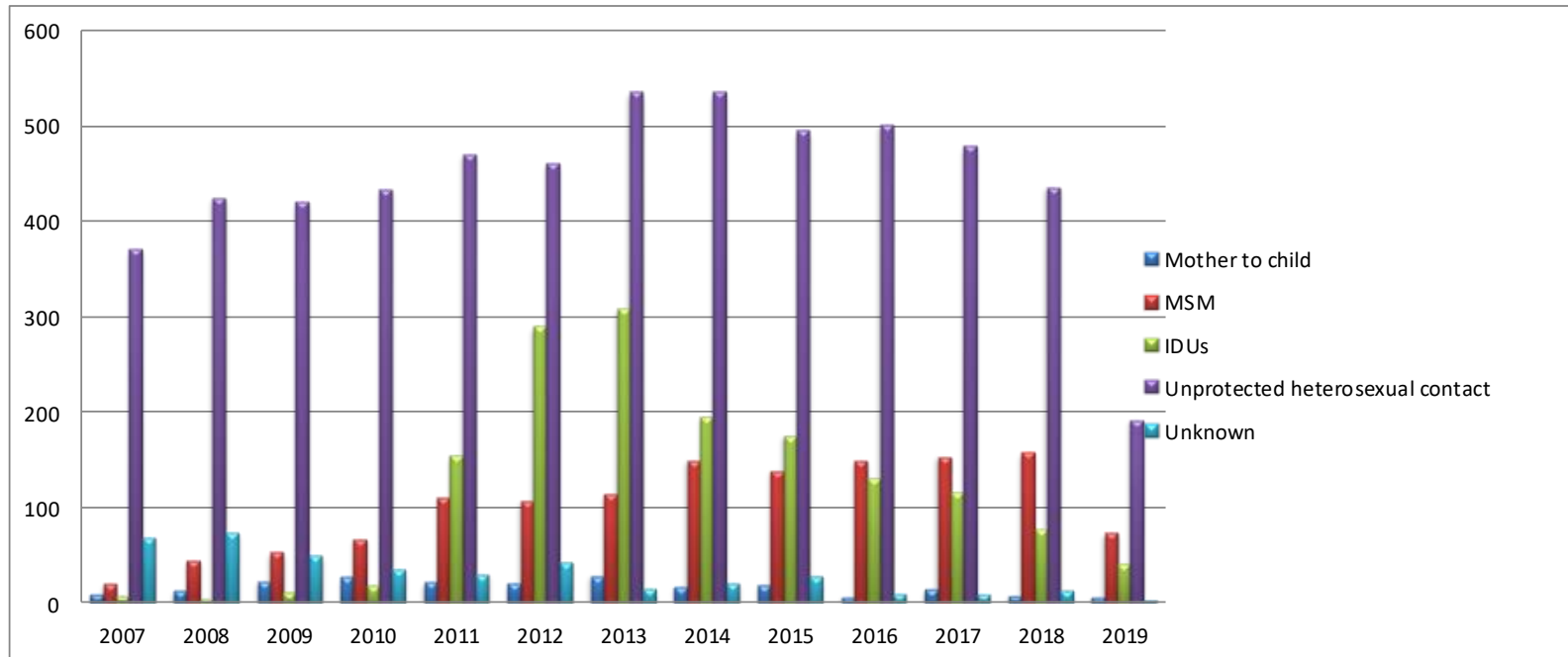
*Updates, including case reporting and late reporting, are performed annually.

** Newborns perinatally exposed to HIV with “HIV infected” status in 2019 and children under surveillance from the previous years and confirmed in 2019.

Tendencies in ways of transmission Romania 2007-2019



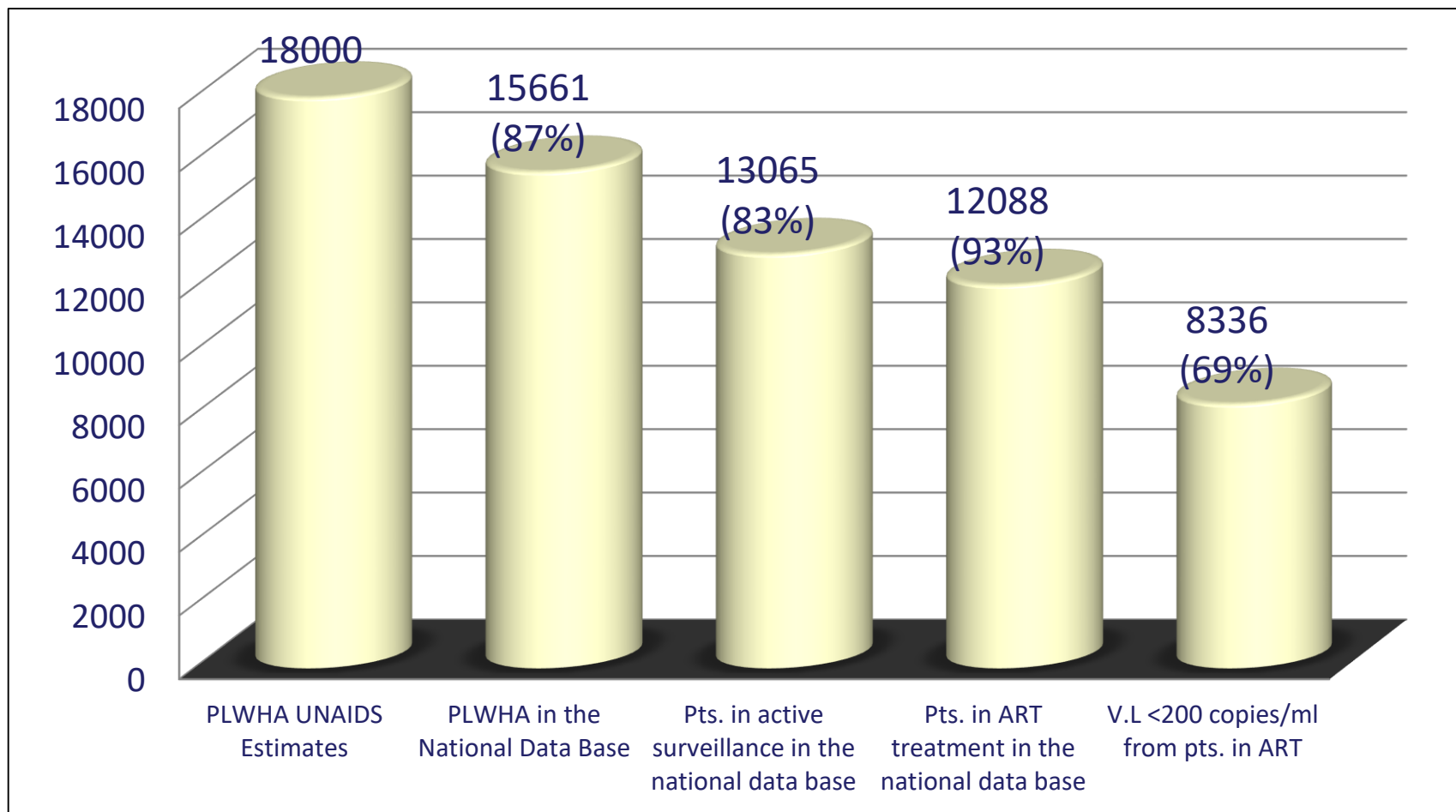
Tendencies in ways of transmission Romania 2007-2019



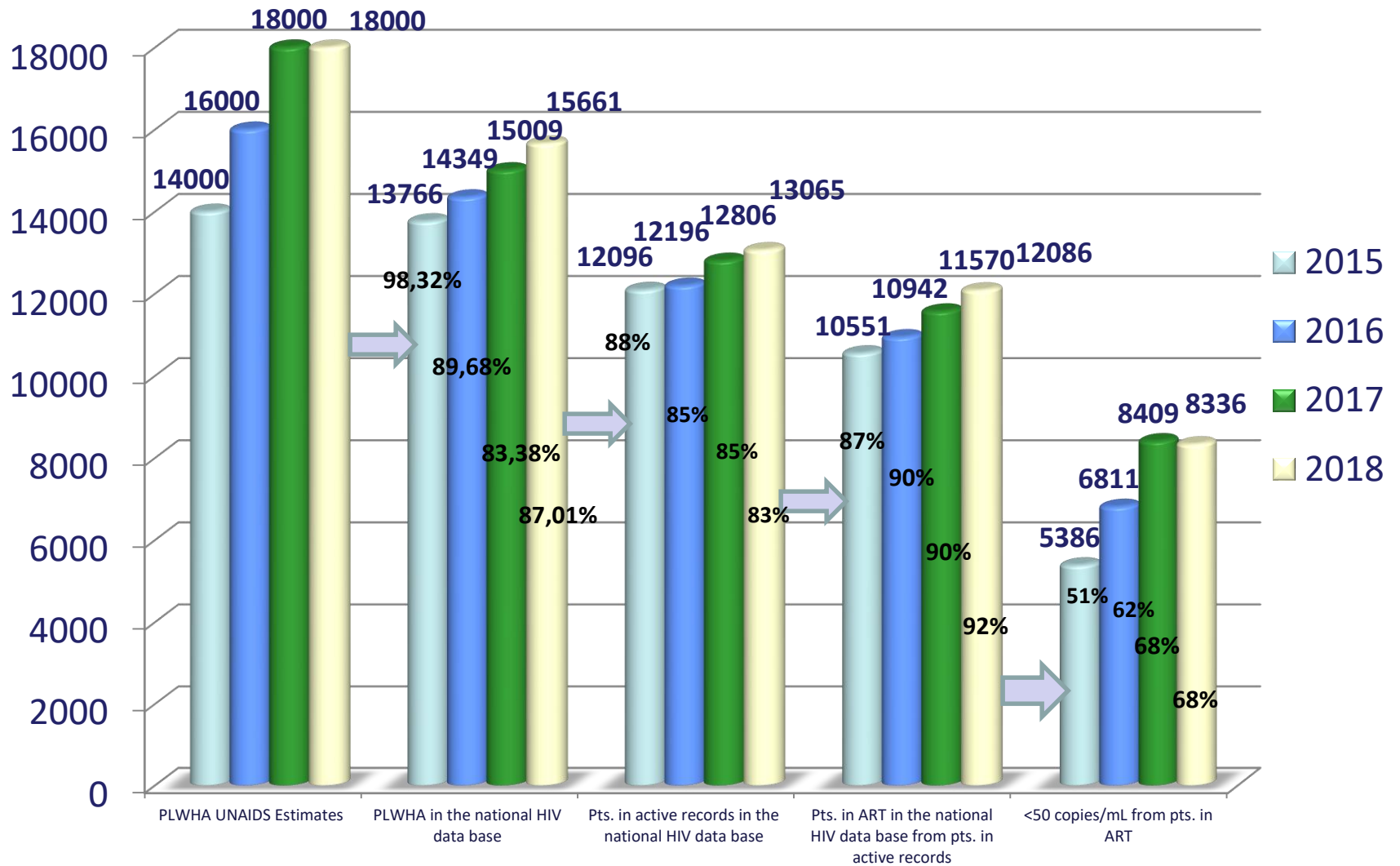


5. Cascade of cares Romania 2018

Cascade of cares Romania 31 December 2018



Cascade of HIV cares in Romania 2015-2018



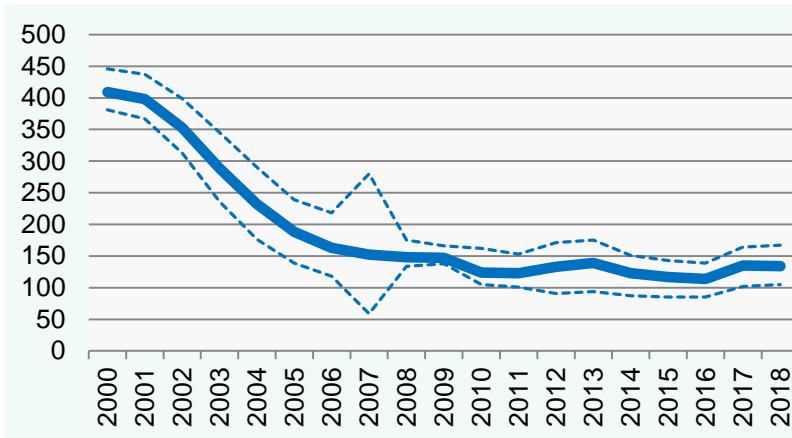
*2017; 2018 V.L. < 200 copies/ml

Source: Compartment for Monitoring and Evaluation of HIV/AIDS Data in Romania

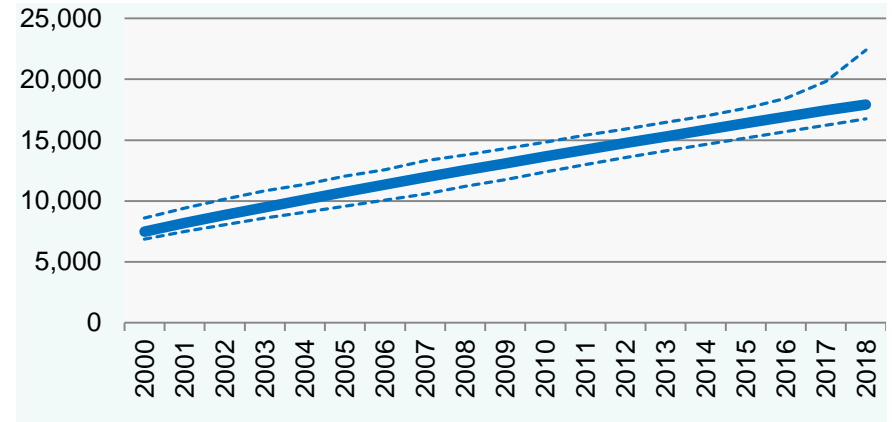
www.cnlas.ro

UNAIDS Estimates Romania 2018

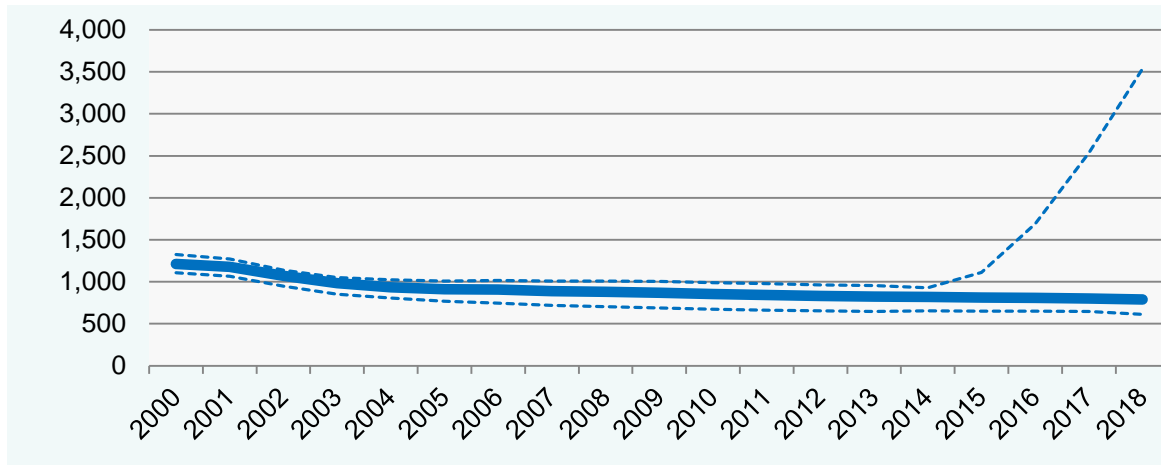
AIDS Deaths



Number of people living with HIV

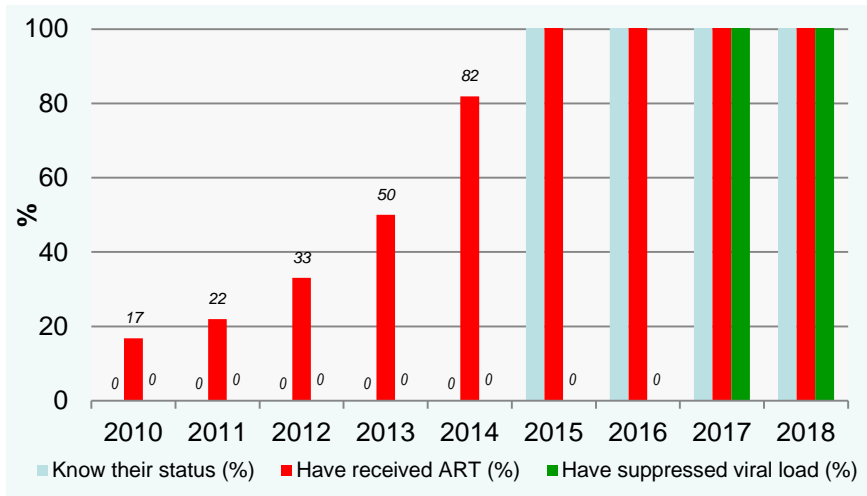


New HIV Infections

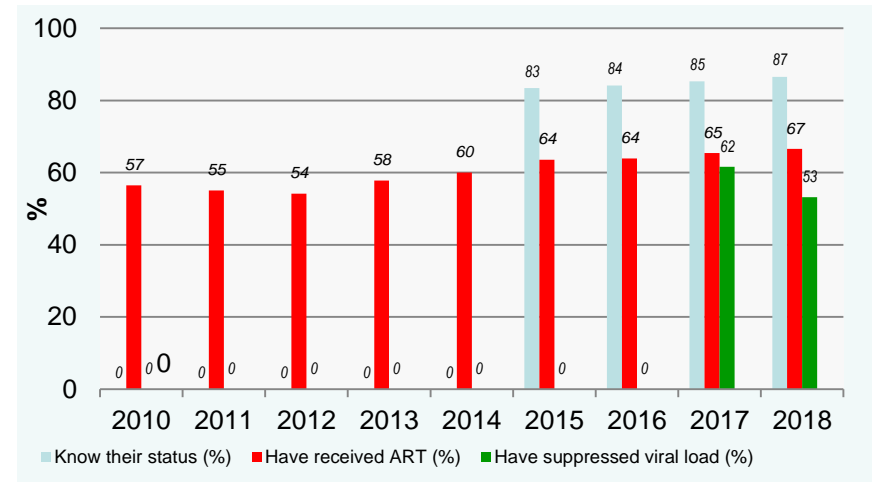


HIV estimates - treatment graphs 2010-2018

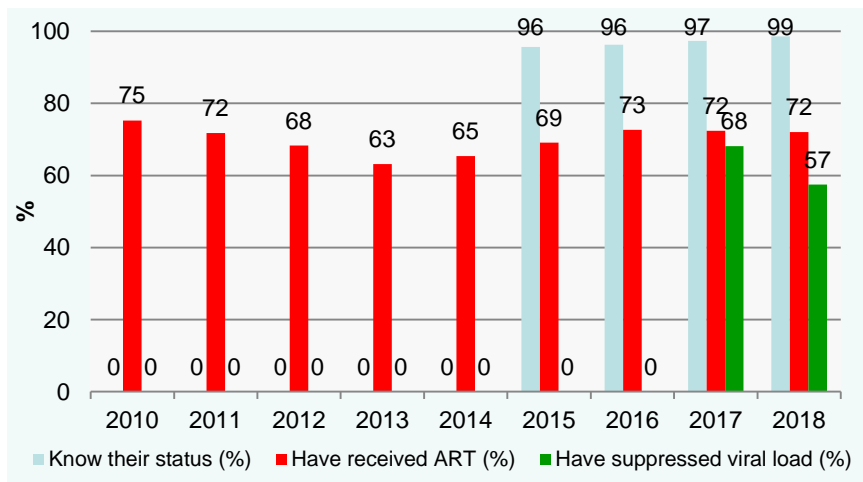
Children living with HIV, ages 0–14



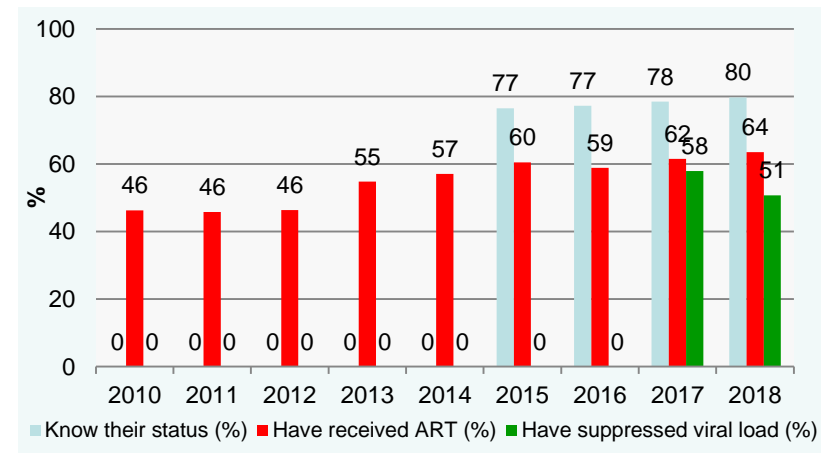
Adults living with HIV, ages 15+



Women living with HIV, ages 15+



Men living with HIV, ages 15+





6. HIV/AIDS global figures

HIV cases diagnosed in the WHO European Region in 2017

	WHO European Region without (and with) data from Russia ^a	West	Center	East without (and with) data from Russia ^a	EU/EEA countries
Reporting countries/number of countries ^b	49/53 (50/53)	22/23	15/15	12/15 (13/15)	30/31
Number of HIV cases	55 018 (159 420)	22 354	6 205	26 459 (130 861)	25 353
Rate per 100 000 population ^c	8,3 (20,0)	6,9	3,2	23,6 (51,1)	6,2
% of cases:					
15-24 years	9,3%	11,0%	13,7%	6,9%	11,1%
50+ years	16,1%	20,7%	13,1%	13,0%	19,3%
Men/women ratio	2,2	2,9	5,8	1,6	3,1
Percentage of new diagnosed cases with CD4 <350 cell/mmc	53,1%	48,0%	52,5%	57,2%	48,6%
Way of transmission					
Unprotected heterosexual contact (men)	25,3%	16,7%	19,4%	33,9%	16,6%
Unprotected heterosexual contact I (femei)	24,1%	17,5%	7,3%	33,7%	16,5%
Men who have sex with men	21,2%	39,7%	28,4%	3,9%	38,2%
Injecting drug users	13,0%	2,7%	2,7%	24,1%	3,7%
Mother to child transmission	0,7%	0,5%	0,6%	0,9%	0,5%
Unknown	15,4%	22,5%	41,2%	3,4%	24,2%
New diagnosed AIDS cases ^d	14 703	2 426	823	11 454	3 130
AIDS rate per 100 000 population	2.3	0.7	0.4	10.2	0.7

^a Numbers in parentheses include data from the Russian Federation for the WHO European Region and the East.

^b No data received from Germany, the Russian Federation, Turkmenistan and Uzbekistan. All data presented were reported to ECDC/WHO through the European Surveillance System (TESSy), except for data for the Russian Federation, which were obtained through publicly available national sources (1).

^c EU/EEA and West rates are adjusted for reporting delay (Annex 6); the corresponding estimated number of new diagnoses adjusted for reporting delay are 27 055 and 23 976, respectively.

^d No data received from Belgium, Germany, Sweden, the Russian Federation, Turkmenistan and Uzbekistan.

Global HIV/AIDS data 2018

People living with HIV/AIDS	Total	37,9 million (32,7 – 44,0 million)
	Adults	36,2 million (31,3 – 42,0 million)
	Women	18,8 million (16,4 – 21,7 million)
	Children < 15 yrs.	1,7 million (1,3 – 2,2 million)
People confirmed with HIV infection in 2018	Total	1,7 million (1,4 – 2,3 million)
	Adults	1,6 million (1,2 – 2,1 million)
	Children < 15 yrs	160 000 (110 000 – 260 000)
AIDS related deaths in 2018	Total	770 000 (570 000 – 1,1 million)
	Adults	670 000 (500 000 – 920 000)
	Children < 15 ani	100 000 (64 000 –160 000)

Compartment for Monitoring and Evaluation of HIV/AIDS Data in Romania



Manager INBI Prof. Dr. Matei Balș	Prof. Dr. Adrian Streinu-Cercel
Coordinator	Dr. Mariana Mărdărescu MD PhD
Coordinator of the HIV Adult's Programme	Lecturer Otilia Benea MD PhD
Coordinator of the HIV Children's Programme	Sorin Petrea MD
Statistical data operators	
PC Operators	As. Med Marieta Iancu
	Daniela Vițelaru
	Sanda Vintilă
Colaborators	Dr. Ionel Iosif
	Claudiu Șchiopu IT Tessy
	UATM
	Romanian HIV/AIDS Center